



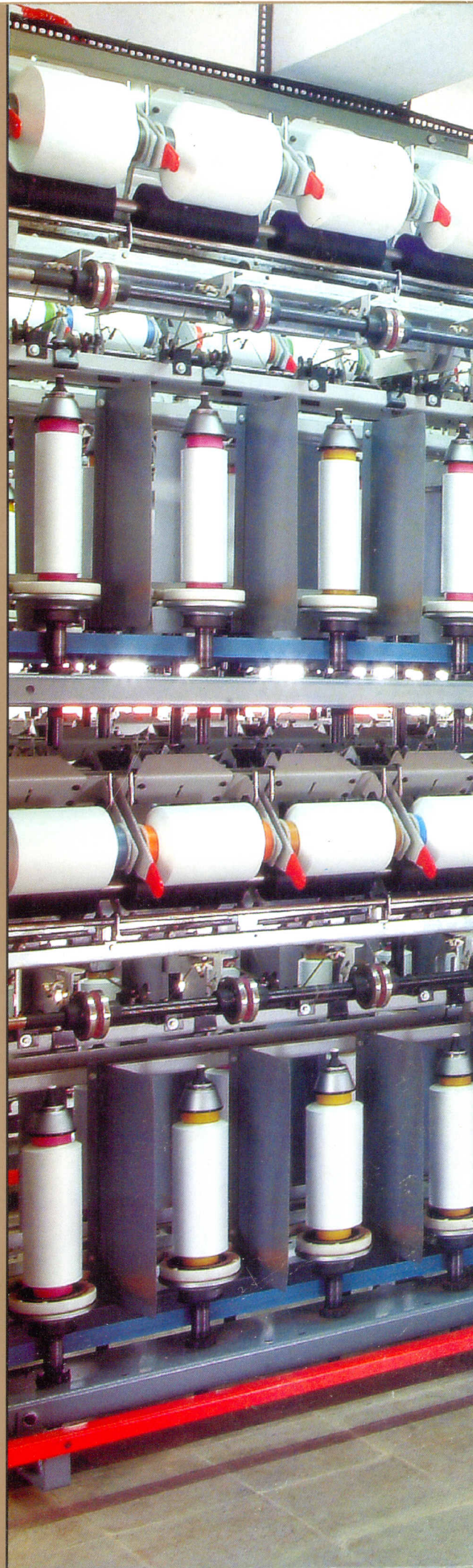
AALIDHRA

TWO - FOR - ONE TWISTER

TEXPRO - 230

**IDEAL FOR COARSER DENIER & LOW TWIST
WITH
3000 gms. KNOTLESS TWISTED PACKAGE.**

**An Indigenous Technology holding
International Status.**





TEXPRO-230

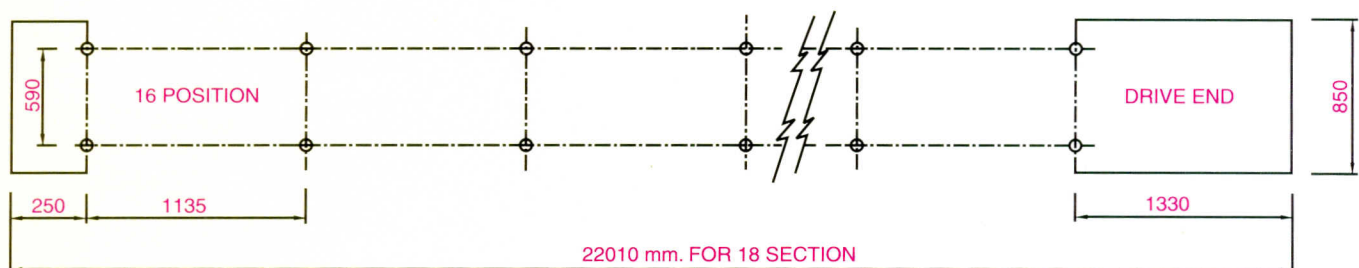
PRODUCTION CAPACITY	
R.P.M.	Production in Kgs/Spindle/day
12000	3.84 X Denier ÷ TPM
10000	3.20 X Denier ÷ TPM
8000	2.56 X Denier ÷ TPM
6000	1.92 X Denier ÷ TPM

TEXPRO - 230

TECHNICAL DATA - TEXPRO - 230

CONSTRUCTION	TWO DECK DOUBLE SIDE				
SPINDLE / SEC.	16 (4 NO./SEC/DECK/SIDE)				
SPINDLE MACHINE	224	240	256	272	288
MACHINE LENGTH MT.	17.09	18.22	19.36	20.49	21.63
MACHINE LENGTH FT.	56	60	64	68	72
CONNECTED POWER H.P.	15 X 2	15 X 2	15 X 2	20 X 2	20 X 2
SPINDLE PITCH	265 mm				
SPINDLE POT DIA	145 mm				
TAKE UP SPEED	100 mtrs./min				
MECHANICAL SPINDLE SPEED	UPTO 12000 RPM				
DENIER RANGE	80 TO 1000				
TWIST RANGE	80 TO 4000 TPM				
TAKE UP TUBE	230 mm LENGTH, DIA 57/69 mm				
PACKAGE DIA	240 mm				
PACKAGE WEIGHT	UPTO 3000 gms.				
FEED TUBE	57 mm ID, OR 69 mm ID, LENGTH 300mm				
FEED PACKAGE DIA	145 mm				
FEED PACKAGE WEIGHT	UPTO 3000 gms.				
TRAVERSING	INDIVIDUAL				
TAKE UP SYSTEM	Cradle with damping system and auto pressure adjustment against package built.				
MACHINE WIDTH	850 mm				
MACHINE HEIGHT	2235 mm				

INSTALLATION DIAGRAM



TEXPRO-230

HIGH LIGHTS

Bottom opening Trav. Guide avoids cross Winding.

Individual Biconical Traverse for each position avoiding down time and faulty packages.

Droppers installed at every position helping at Yarn break and feed exhaust

Live Display of R.P.M., T.P.M. and Yarn Speed.

Tangential direct spindle drive offering Twist Uniformity within $\pm 1\%$ with economy in power consumption.

Stainless steel deflection disc offering permanent spindle life.

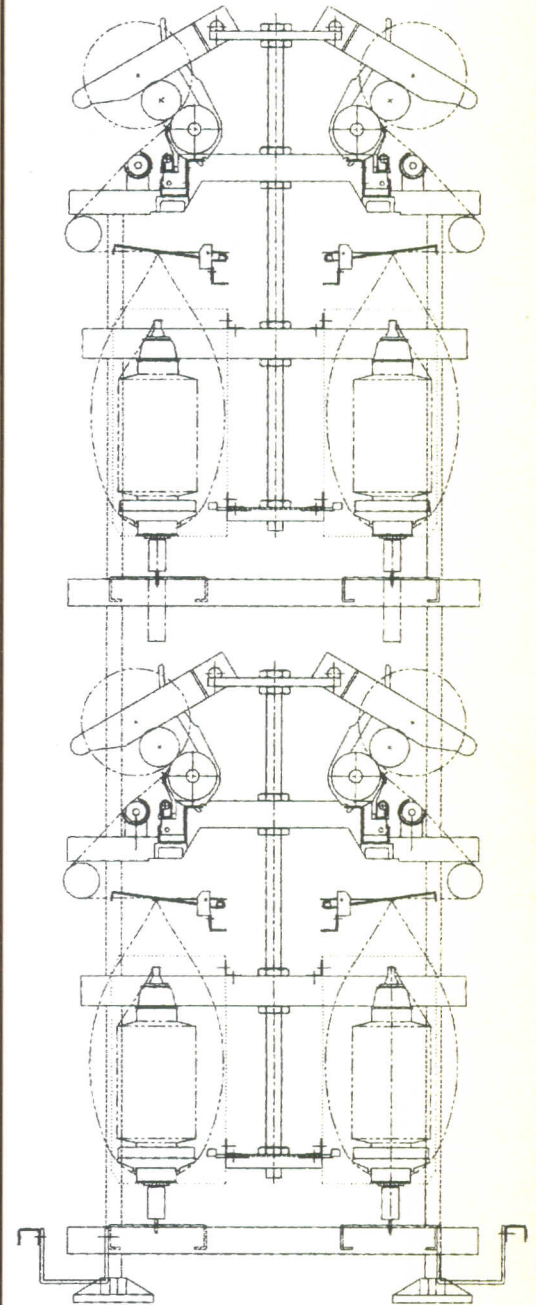
Overfeed at Take-up offering controlled package density.

Operating Panel with Motor Protecting devices & smooth Start

Highly economical system for coarser Denier and low Twist.

Ball Tensor type Feed Tension Control.

Line Diagram



MANUFACTURER :

AALIDHRA TEXPRO ENGINEERS PVT. LTD.

PLOT NO. 3/122, VAGHDHARA ROAD, DADRA-396191, UTDNH, INDIA.

PH. : (91-260) 2668608 FAX : (91-260) 2668707



Marketed By :

AALIDHRA TEXTILE ENGINEERS LTD.

Head office : 2, Functional Estate, Road No. 6, Udyognagar Udhna, Surat - 394 210. (Guj) India.

Ph. Bord. : 2279520 - 30 - 40, P : (91-261) 2281452 Fax : (91 - 261) 2278789

E. Mail : alidhra@alidhra.com Visit us at-www.alidhra.com



Regnl. office : 307, Monarch Chamber, Marol-Maroshi Road, Andheri (E), Mumbai - 400 059.

Tel. : (91 - 22) 28503023 - 6351, Fax : 28503023, E. Mail : sales@alidhra.com

NB : All of the datas, illustration and photos and brocher are not binding, ALIDHRA reserves the right to change them without a special notice Some optional devices are shown in illustration and photos.

ALIDHRA/2003